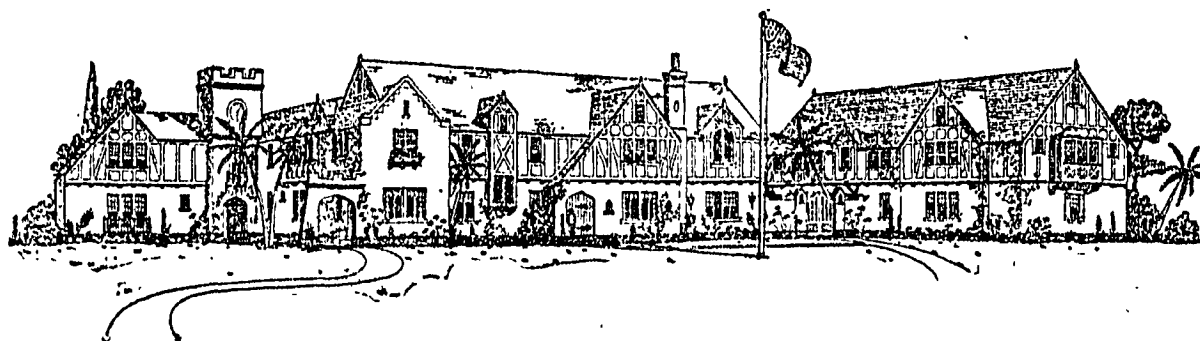


## School for Boys to Be Built Near Culver City



The Pacific Military Academy

Now under construction on Washington Boulevard. It will have accommodations for 150 boys. H. H. Whiteley is the architect.

## Boys' School Under Way at Culver City

One of the most modern school plants in Southern California is being constructed at Culver City for the Pacific Military Academy, to be ready for occupancy in September.

An attractive English type group of buildings, designed by H. H. Whiteley, architect, will be erected on a five-acre plot with a large frontage on Washington Boulevard. The sanitary equipment, lighting, kitchen and mess hall arrangements have been given special attention. Special features are the open air class rooms and sleeping rooms and radio recreation room. The drill and play grounds will be spacious and fitted with the best apparatus. Accommodation is provided for 150 boarding pupils. The faculty has been selected with special reference to experience and to success in school work.

## INSURANCE MAN BUYS FINE WALNUT GROVE

[SPECIAL CORRESPONDENCE]

SANTA ANA, Aug. 5.—J. W. Estes, Sr., State manager for the Aetna Insurance Company, has bought a twelve-acre walnut grove at the northwest corner of Washington and Bristol streets, for the reported sum of \$25,000. Estes owns 7000 acres of land near St. Louis, Mo., and is recognized as a breeder of high-class thoroughbred registered Duroc and Holstein cattle. As State manager for the insurance company he visits agencies of every State in the Union, but his visit here made him a firm booster for Santa Ana and Orange county. He expressed his belief that Santa Ana would be a city of 35,000 in two years.

## NEW PLANT WILL BE STARTED NEXT WEEK

[SPECIAL CORRESPONDENCE]

SANTA ANA, Aug. 5.—With their new building completed and machinery installed the Orange County Bi-Products Company expects to open next week, it was announced today by F. P. Jayne, manager. Plans are being made for a visitors' day some time next week and to give a demonstration of what the new factory will do. Milk-bottle case production has been under way, and now wood brickets will be made from shavings and sawdust materials, which have been a waste heretofore. Arrangements have been made with the local planing mills for the purchase of all such materials, to be made into briquettes.

## BELVEDERE GARDENS RESIDENTS ORGANIZE

An improvement association has been formed by the residents of Belvedere Gardens, the subdivision being marketed by the Janss Investment Company. The first movement sponsored by the new association was a "clean your lot" day, when every resident of the district pledged himself not only to clean his own lot, but to assist his neighbors also. The Janss Investment Company also had a large force of men on hand to assist in the undertaking.

At a recent meeting of the association John Schneringer was elected president, and K. I. Davis, manager of the Whittier Boulevard branch of the Los Angeles Trust and Savings Bank, was made secretary and treasurer.

Dr. J. P. Mortenson is erecting a business block in Belvedere Gardens at the corner of Arizona street and Whittier Boulevard. The building will contain a combined physician's and dentist's office. Dr. Mortenson was formerly associated with the Cottage Hospital at Santa Barbara.