

TRACT NO. 17263

IN THE CITY OF LOS ANGELES

BEING A SUBDIVISION OF A PORTION OF BLOCK 14 AND ALL OF BLOCK 15 OF THE PALMS AS PER MAP RECORDED IN BOOK 13, PAGES 1 TO 4 INCLUSIVE OF MISCELLANEOUS RECORDS, RECORDS OF LOS ANGELES COUNTY CALIFORNIA.

July 26, 1951
3 P.M.
413
30

THE BEARING "N.32°39'35"W" OF THE CENTER LINE OF OVERLAND AVENUE AS SHOWN ON THE MAP OF TRACT NO. 12388 RECORDED IN MAP BOOK 261, PAGES 31 TO 33 INCLUSIVE, RECORDS OF LOS ANGELES COUNTY, WAS USED AS THE BASIS OF BEARINGS SHOWN ON THIS MAP

Walters
50°

I, Glenn I. Voorheis, hereby certify that I am a Licensed Surveyor of the State of California, and that this map consisting of four sheets correctly represents a survey made under my supervision June 1951, that the survey is true and complete as shown, that the monuments shown hereon actually exist or will be in place not later than Feb. 1st, 1952, that their position and character are correctly shown and that the said monuments are sufficient to enable the survey to be retraced.

Glenn I. Voorheis
L.S. No. 2278

STATE OF CALIFORNIA)
COUNTY OF LOS ANGELES) ss

On this 16th day of July, 1951, before me, Hortense M. Cuddy, a Notary Public in and for said County personally appeared George J. Cuddy known to me to be the VICE President and Street D. Noble known to me to be the Secretary of PONTICOUPOULOS, INC.

the Corporation that executed the within instrument, and known to me to be the persons who executed the within instrument on behalf of the corporation therein named, and acknowledged that said Corporation executed the same as owners.

Hortense M. Cuddy
NOTARY PUBLIC
My commission expires September 10, 1954

We hereby certify that we are the owners of or are interested in the land included within the subdivision shown on the annexed map and we hereby consent to the preparation and recordation of said map and subdivision as shown within the colored border lines and we hereby dedicate to the public use the Avenue Walk, Places and Alleys shown on said map within said subdivision and we also grant and dedicate to the City of Los Angeles easements for public utility purposes, ^{and Water Line} over the strips of land so designated on said map within said subdivision and we also grant and dedicate for public use for street purposes lots 62 and 63 designated as future street on said map within said subdivision, reserving to ourselves for the use of ourselves and successive owners of said lots 62 and 63 any and all ordinary uses of said lots except for access purposes and the erection or construction of buildings thereon until such time as the legislative body shall accept the same for street purposes.

Also as a dedication to public use, while all of Overland Avenue adjacent to this subdivision remains a public highway and for such time only, we hereby abandon all rights of vehicular ingress or egress from lots 1 to 18 inclusive to said Avenue so that the owners of said lots 1 to 18 inclusive abutting this Avenue during such time as said lots remain in a residential zone will have no right of vehicular access whatever in the highway as such except the general easement of travel which belongs to the whole public. If any change of alignment or width of said highway results in the vacation of any part thereof adjoining this subdivision, such vacation terminates the above dedication as to the part vacated.

I hereby certify that a good and sufficient bond in the sum of \$ 24,750 duly approved by the Board of Supervisors of the County of Los Angeles has been filed with said Board as security for the payment of all special assessments collected as taxes on land shown on said map.

Harold J. Ostly
County Clerk and Ex-officio Clerk of the Board of Supervisors of the County of Los Angeles
By Greg Johnson

Approved July 26, 1951
C. E. ARNOLD County Surveyor
By F. A. Overton Deputy

PONTICOUPOULOS, INC.
A Corporation
George J. Cuddy
Vice President
Street D. Noble
Secretary

CITY OF LOS ANGELES
MAYOR Walter C. Peterson
CITY CLERK WALTER C. PETERSON
Walter C. Peterson
DEPUTY

I HEREBY CERTIFY THAT I HAVE EXAMINED THIS MAP AND THAT THE SUBDIVISION AS SHOWN HEREON IS SUBSTANTIALLY THE SAME AS THAT SHOWN ON THE TENTATIVE MAP AND ANY APPROVED ALTERNATIONS THEREOF. THAT ALL PROVISIONS OF CHAPTER 126 STATUTES OF CALIFORNIA AS AMENDED STATE OF CALIFORNIA AND OF ALL LOCAL ORDINANCES APPLICABLE AND IN EFFECT AT THE TIME OF THE APPROVAL OF THE TENTATIVE MAP HAVE BEEN COMPLIED WITH AND I AM SATISFIED THAT THIS MAP IS TECHNICALLY CORRECT.

CITY ENGINEER LLOYD ALDRICH
DATE JULY 17, 1951
Lloyd Aldrich

I HEREBY CERTIFY THAT I HAVE EXAMINED THIS MAP AND THAT THE SUBDIVISION AS SHOWN HEREON IS SUBSTANTIALLY THE SAME AS THAT SHOWN ON THE TENTATIVE MAP AND ANY APPROVED ALTERNATIONS THEREOF. THAT ALL PROVISIONS OF CHAPTER 126 STATUTES OF CALIFORNIA AS AMENDED STATE OF CALIFORNIA AND OF ALL LOCAL ORDINANCES APPLICABLE AND IN EFFECT AT THE TIME OF THE APPROVAL OF THE TENTATIVE MAP HAVE BEEN COMPLIED WITH AND I AM SATISFIED THAT THIS MAP IS TECHNICALLY CORRECT.

CITY CLERK WALTER C. PETERSON
DATE July 24, 1951
By Walter C. Peterson
DEPUTY

I HEREBY CERTIFY THAT THERE IS ON FILE IN THE OFFICE OF THE CITY ENGINEER OF THE CITY OF LOS ANGELES COUNTY OF LOS ANGELES A TRUE AND CORRECT COPY OF THE FILED MAP MADE BY THE TITLE INSURANCE AND TRUST COMPANY OF LOS ANGELES, CALIFORNIA, FILED JULY 16, 1951, UNDER MAP NO. 13473173.

Ponticououlos, Inc.
City of Los Angeles
(28) (ART. 10) THE ONLY PERSONS WHOSE CONSENT IS REQUIRED FOR THE RECORDING OF THIS MAP BY LAW.
CITY ENGINEER LLOYD ALDRICH
DATE JULY 17, 1951
Lloyd Aldrich

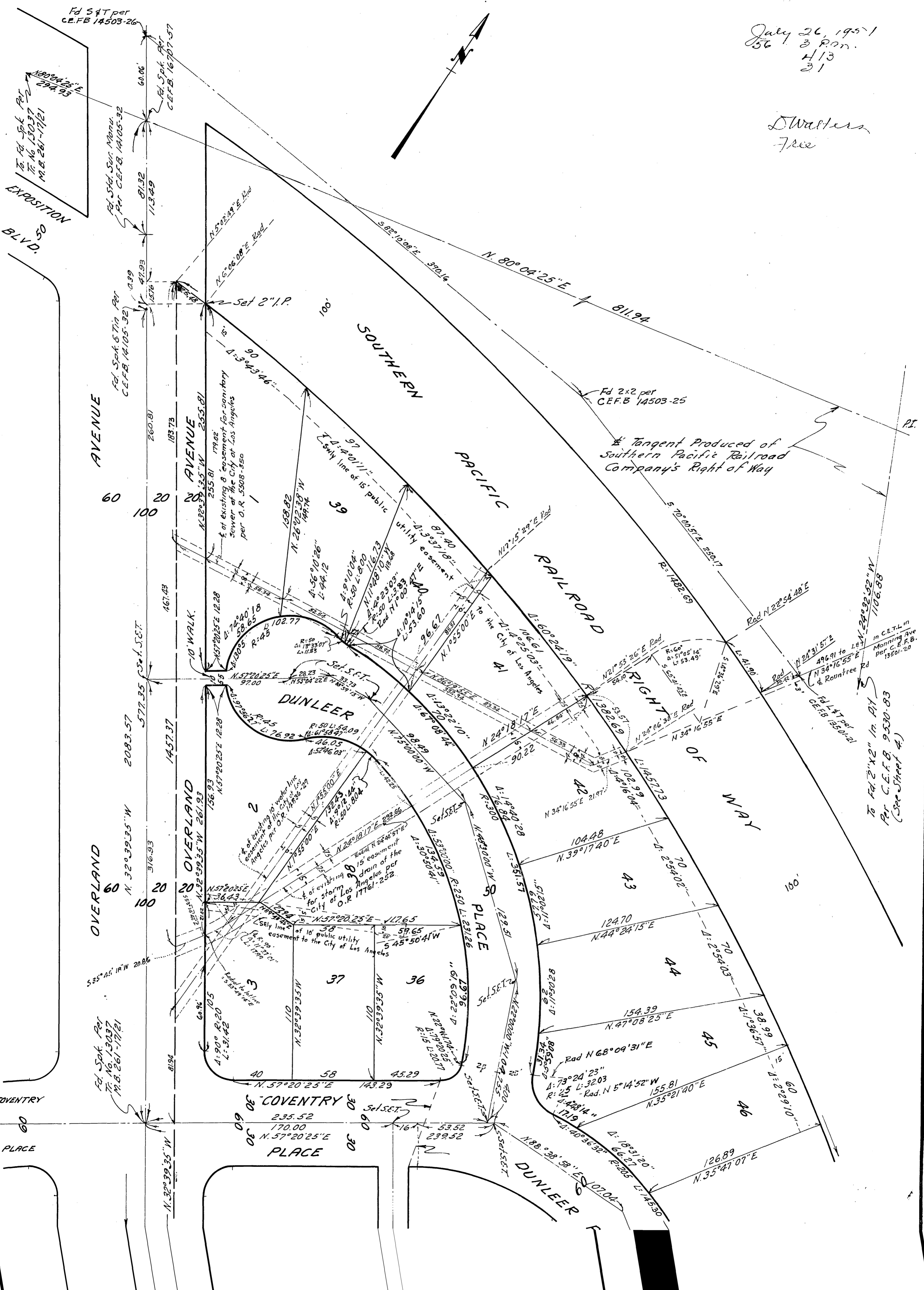
I HEREBY CERTIFY THAT ALL SPECIAL ASSESSMENTS WHICH ARE IN CHARGE OF THE CITY OF LOS ANGELES HAVE BEEN PAID.
C. K. STEELE
DATE July 13, 1951
Charles Steele

TRACT NO. 17263

IN THE CITY OF LOS ANGELES

July 26, 1951
3 P.M.
H13
31

D. Walters
Free

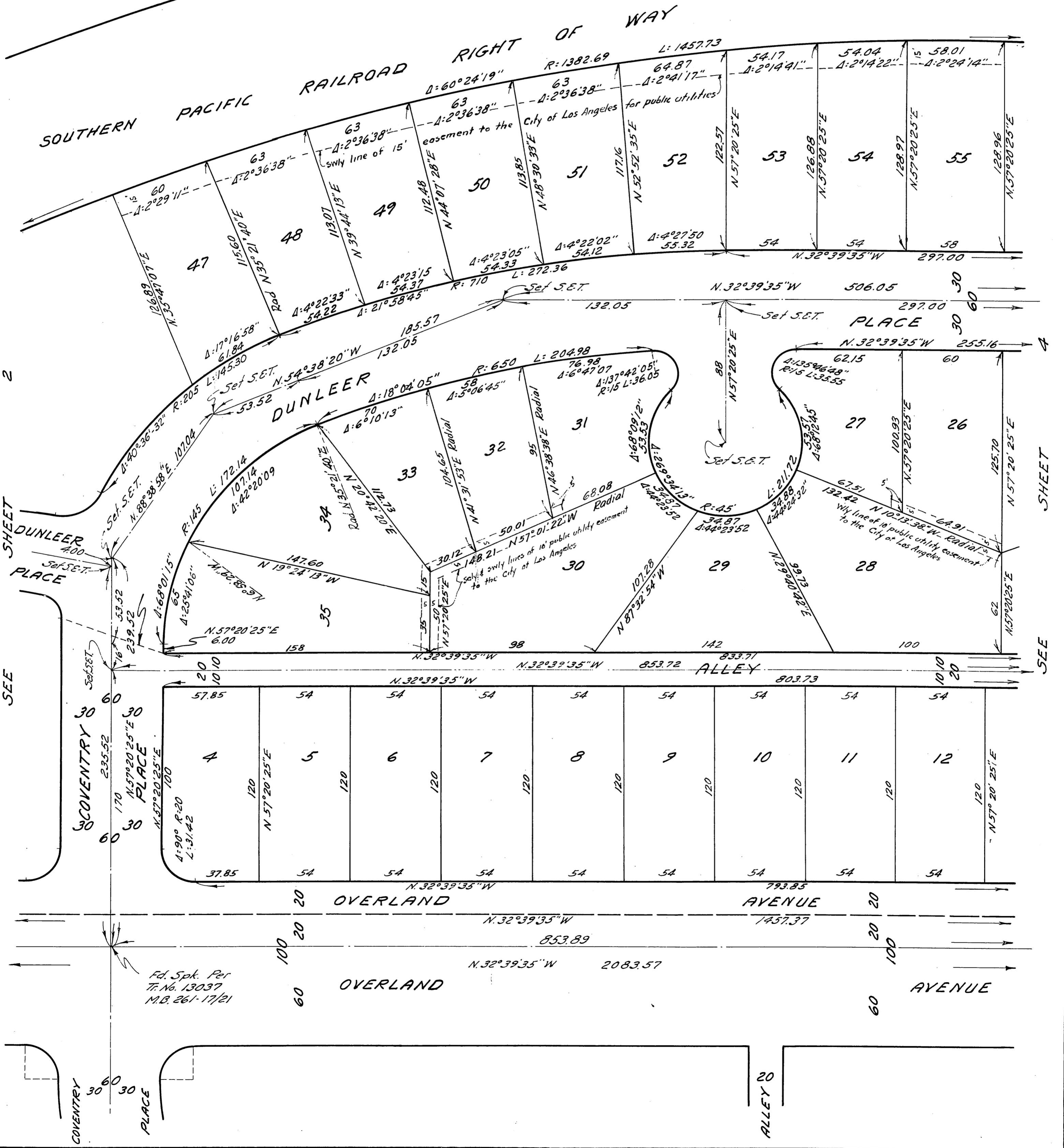
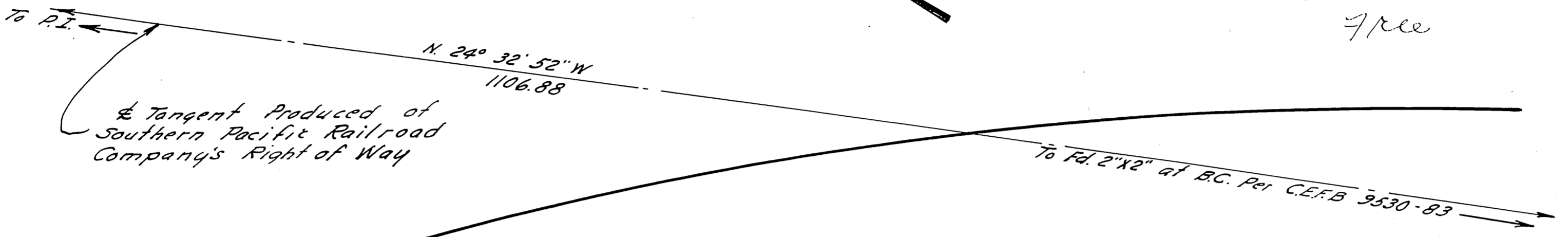
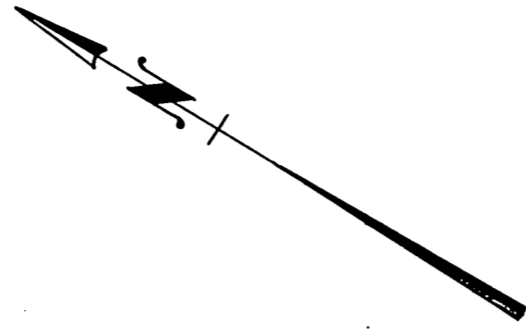


TRACT NO. 17263

IN THE CITY OF LOS ANGELES

July 26, 1951
3 p.m.
413
32

Walters
Free



Fd. Spk. Per
T. No. 13037
M.B. 261-17/21

SCALE 1" = 40'

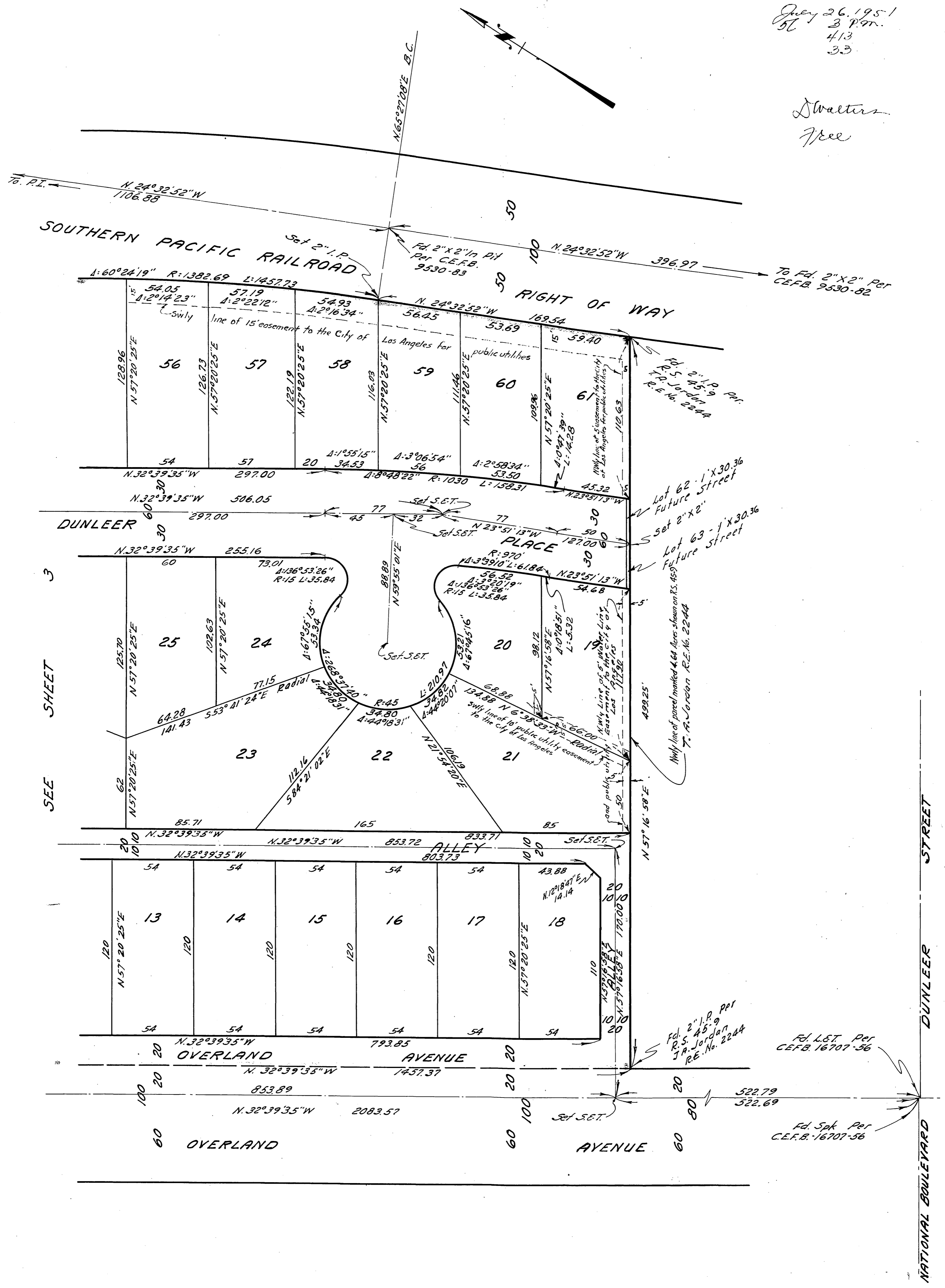
TRACT NO. 17263

SHEET 4 OF 4 SHEETS

IN THE CITY OF LOS ANGELES

July 26, 1951
56
3 P.M.
413
33

Walters
Tree



SEE SHEET 3

Fd. 2" x 2" P.I. Per R.S. 45-9 J.P. Jordan R.E. No. 2244

Fd. L.E.T. Per C.E.F.B. 16707-56

Fd. Spk Per C.E.F.B. 16707-56

NATIONAL BOULEVARD
DUNLEER STREET