

TRACT NO. 11556

IN THE CITY OF LOS ANGELES.
CONSISTING OF THREE SHEETS.

BEING A SUBDIVISION OF BLOCK 6 AND A PORTION OF BLOCK 7,
THE PALMS, AS PER MAP RECORDED IN BOOK 21 PAGES 43
TO 45 INC. OF MISCELLANEOUS RECORDS, RECORDS OF LOS
ANGELES COUNTY.

RECORDED
AT REQUEST OF OWNER
Dec 21-1938
IN BOOK 21
PAGE 47
MISCELLANEOUS RECORDS
LOS ANGELES COUNTY

E. C. Halladay
500

SCALE 1"=60'

OTTO BALDUS - REGISTERED CIVIL ENGINEER.

We hereby certify that we are the owners of or interested in the land included within the subdivision shown on this map, and that we are the only persons whose consent is necessary to pass a clear title to said land and we consent to the making of said map and subdivision as shown within the colored border lines, and hereby dedicate to the public use all the Avenues, Roads, Drive, Way and Boulevard shown on said map within said subdivision and grant and dedicate to the City of Los Angeles easements for Sanitary Sewer, Storm Drain and Public Utility purposes over the strips of land shown on said map, and we also dedicate to public use for street purposes those certain strips of land, lots 121 and 122, designated as "Future Street," shown on said map within said subdivision, reserving to ourselves for use of ourselves and successive owners of said lots 121 and 122 any and all ordinary uses of said land except the erection or construction of buildings thereon, until such time as the legislative body shall accept the same for a public street.

I, OTTO BALDUS, hereby certify that I am a Registered Civil Engineer of the State of California, and that this map consisting of three sheets, correctly represents a survey made under my supervision, July 1938, and that all the monuments shown hereon actually exist or will be set before December 1, 1938, that their position and character are correctly shown and are sufficient to enable the survey to be retraced.

Otto Baldus R.E. NO. 1682

NOTE.

The bearing of MANNING AVENUE, N. 55° 24' 20" W., as shown on map of TRACT No. 7156 recorded in Map Book 80 pages 1 to 5 inc., records of Los Angeles County, was taken as the basis of bearings shown on this map.

FRANCIS LAND COMPANY.

David V. Carson President.
Fred Crew Secretary.

I hereby certify that there is on file in the office of the City Engineer of the City of Los Angeles, County of Los Angeles, State of California, a certificate issued by the Title Guarantee and Trust Company of said City, Order No. 1137344 dated Oct. 17, 1938, certifying that it appears from the records of said City and County that

FRANCIS LAND COMPANY

is the only person... whose consent is necessary to offer for dedication the streets alleys and easements as shown on this subdivision map within the colored border lines.

loyd Aldrich
City Engineer

Date Dec. 17 1938 By _____ Deputy

State of California }
County of Los Angeles } ss
On this 3rd day of August, 1938, before me Minna A. Newman Notary Public in and for said County, personally appeared David Carson known to me to be the President, and Fred Crew, known to me to be the Secretary of FRANCIS LAND COMPANY, the Corporation that executed the within instrument and known to me to be the persons who executed the within instrument on behalf of the corporation therein named, and acknowledged that such Corporation executed the same.

Minna A. Newman Notary Public.
In and for the County of Los Angeles,
State of California.
My Commission expires March 30, 1942.

Approved, Dec. 21, 1938
ALFRED JONES, County Surveyor
By Wayne Clark Deputy

I HEREBY CERTIFY THAT I HAVE EXAMINED THIS MAP AND THAT THE SUBDIVISION AS SHOWN HEREON IS SUBSTANTIALLY THE SAME AS IT APPEARED ON THE TENTATIVE MAP, AND ANY APPROVED ALTERATIONS THEREOF, THAT ALL PROVISIONS OF CHAPTER 670, STATUTES OF 1937, STATE OF CALIFORNIA, AND OF ALL LOCAL ORDINANCES APPLICABLE AND IN EFFECT AT THE TIME OF THE APPROVAL OF THE TENTATIVE MAP HAVE BEEN COMPLIED WITH, AND I AM SATISFIED THAT THIS MAP IS TECHNICALLY CORRECT.

DATE 12-12-38 *loyd Aldrich*
CITY ENGINEER

I HEREBY CERTIFY THAT ALL SPECIAL ASSESSMENTS OF WHICH I AM IN CHARGE, TO WHICH THE LAND INCLUDED IN THE WITHIN SUBDIVISION OR ANY PART THEREOF IS SUBJECT, AND WHICH MAY BE PAID IN FULL, HAVE BEEN PAID IN FULL.

C. E. Steele, Director, Bureau of Assessments.
BY A. H. J. Bauer, DEPUTY
Aug. 8, 1938

I hereby certify that this map was, by resolution, duly introduced and approved by the City Council of the City of Los Angeles on the 21st day of December, 1938 and that the City Clerk, of said City was by said resolution authorized and directed to endorse thereon, its approval of the same, and that all of the streets, roads, alleys, highways and easements shown and delineated on this map and thereby offered for dedication as public streets, roads, alleys, highways and easements excepting such as have heretofore been dedicated and accepted on behalf of the public, are hereby dedicated as public streets, roads, alleys, highways and easements on behalf of the public by the City Council of the City of Los Angeles, provided that nothing herein contained shall be construed as an acceptance of any improvements made in or upon any street, road, alley, highway or easement shown or delineated upon this map.

Dated the 21st day of December, 1938
By Order and Resolution of the City Council of the City of Los Angeles.

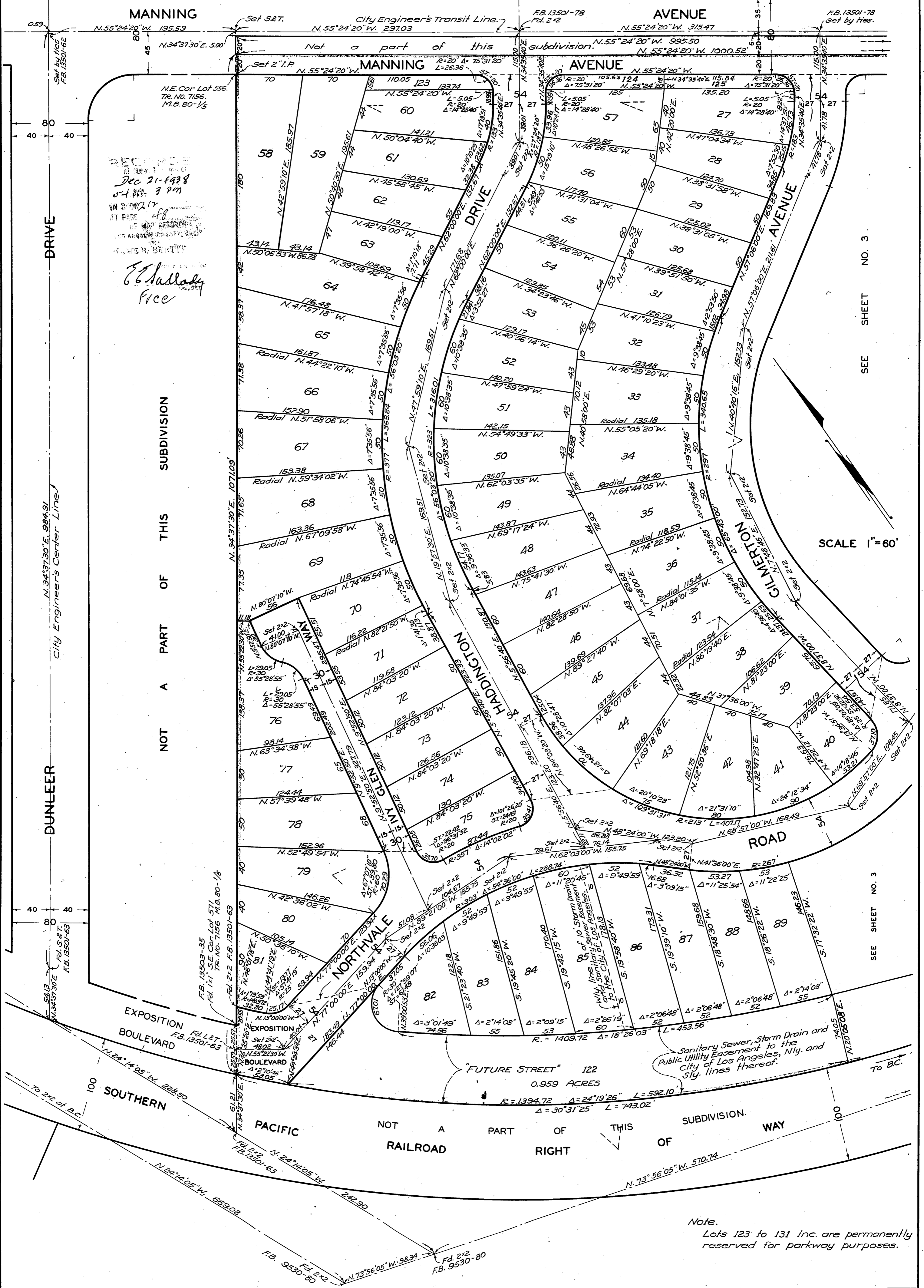
Robert Cunningham
City Clerk

Approved by the City Council of the City of Los Angeles
on the 21st day of December, 1938
Robert Cunningham
City Clerk

TRACT NO. 11556

IN THE CITY OF LOS ANGELES.

OTTO BALDUS - R.E. NO. 1682



Dec 21-1938
 3 PM
 AT PAGE 48
 OF MAP RECORDED
 IN THE OFFICE OF THE
 COUNTY CLERK OF LOS ANGELES COUNTY
 CALIFORNIA
 WITNESS MY HAND AND SEAL
 THIS 21st DAY OF DECEMBER 1938
 J. HALLADAY
 Recorder

NOT A PART OF THIS SUBDIVISION

SCALE 1"=60'

SEE SHEET NO. 3

SEE SHEET NO. 3

Note.
 Lots 123 to 131 inc. are permanently reserved for parkway purposes.

TRACT NO. 11556

IN THE CITY OF LOS ANGELES.

OTTO BALDUS - R.E. NO. 1682

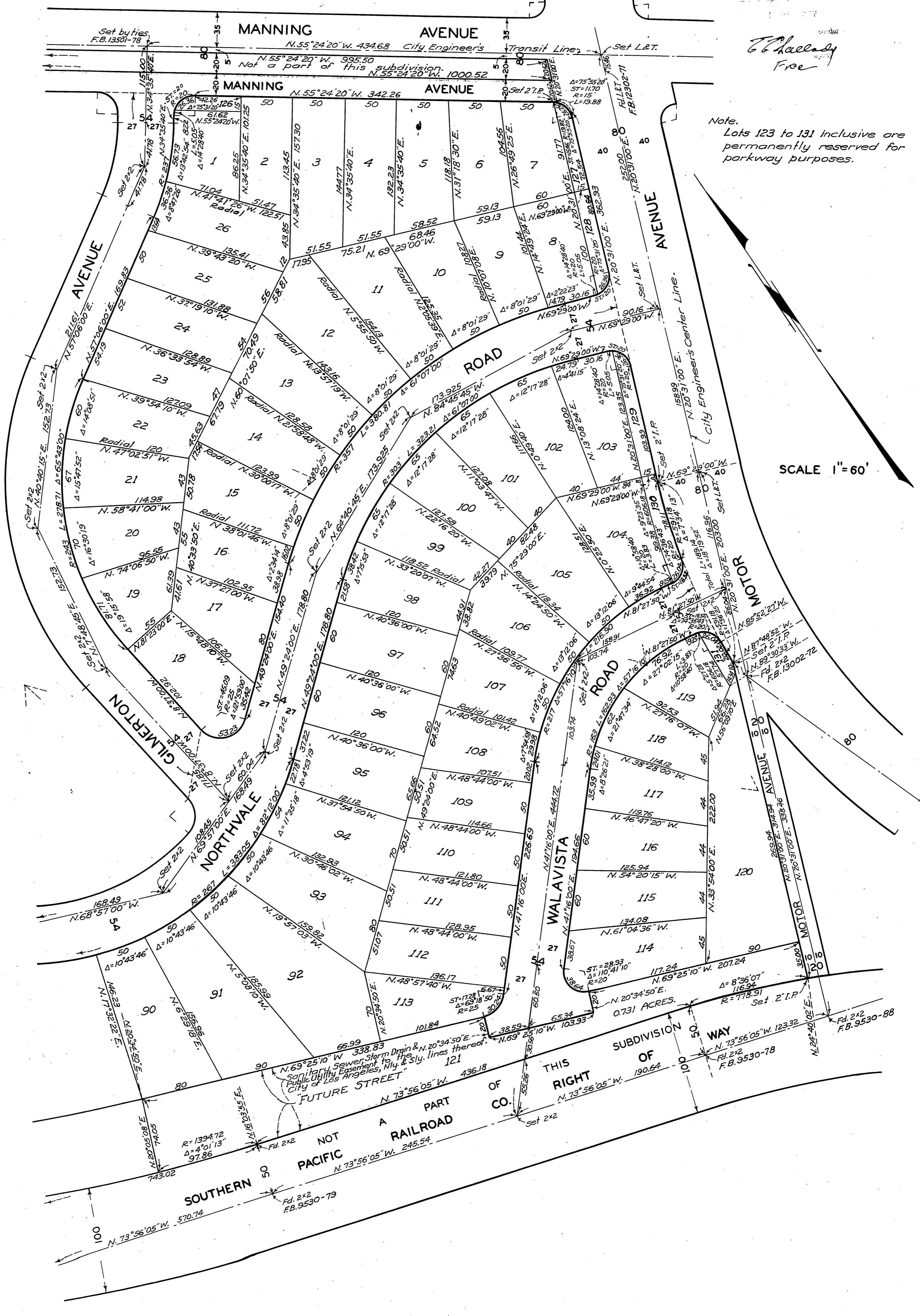
Dec 21-1978
4:37 PM
212-49

J. Halladay
Free

Note.
Lots 123 to 131 inclusive are permanently reserved for parkway purposes.

SCALE 1" = 60'

SEE SHEET NO. 2



THIS SUBDIVISION OF RIGHT OF CO.

PACIFIC RAILROAD NOT A PART OF

SOUTHERN RAILROAD

0.731 ACRES. Set 2'I.P. Fd. 212 F.B. 9530-78

Fd. 212 F.B. 9530-88