

# MAKING A "COUNTRY ESTATE" IN THE SUBURBS PAY FOR ITSELF.

LYANS, R T

Los Angeles Times (1886-1922); Jul 18, 1920; ProQuest Historical Newspapers: Los Angeles Times pg. X2

## MAKING A "COUNTRY ESTATE" IN THE SUBURBS PAY FOR ITSELF.

BY R. T. LYANS.

**I**N THE selection of a site for a country homeplace there are a great many factors to be taken into consideration, or rather a combination of factors, which when met and solved will reflect the wisdom of the far-seeing man in the creation of a real home. Too many men make their selections hurriedly and fail to grasp the real essentials or the future possibilities of a certain chosen place. Emphasis should not be laid on one particular advantage but on a combination of advantages, both present and future, which will make such a place distinctively attractive and add to its value.

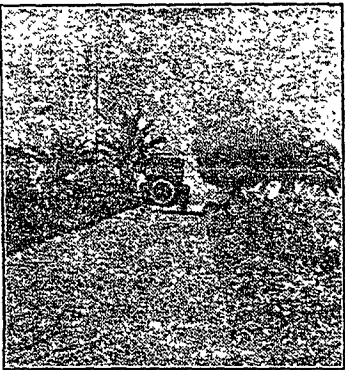
Los Angeles and vicinity have become famous throughout the world as a suitable locality for establishing fine homes and estates. Many of these fine places are fittingly termed country homes, and holdings of this character are constantly increasing in number in the outlying scenic and mountainous districts around the cities and towns. Hills and mountains which at one time were considered valueless except for their natural beauty are now being eagerly purchased at high prices and fine homes are being erected upon them because of their picturesque settings and outlook. However, the setting and view are not the only factors in determining the location of the ideal country home.

Ferdinand R. Bain, president of the Southern Counties Gas Company, decided when he began seeking for a suitable site for a country home, that he wanted a place that was easily accessible to the city, one with scenic attractions, one situated in a fertile spot where he could grow things and have ideal farming conditions, and one with a good water supply. And he found the place he was looking for right at the door of Los Angeles.

Following the fine boulevards out of the city in a southwesterly direction towards The Palms, the motorist comes to La Lomita, which interpreted, means "The Little Hill." Here Mr. Bain believes he has

found a piece of land which will make an ideal country home. He is therefore improving this twenty-acre tract with modern conveniences designed to make it a wonderful place in which to enjoy life, and besides is laying it out so as to be able to raise pure-bred livestock and make of it a model small farm.

From La Lomita Ranch, the panoramic view is unexcelled. The land lies between



It Delights the Eye.

Glimpse of ornamental trees and flower gardens of La Lomita Ranch.

the mountains and the sea and on a boulevard which enables the owner to drive back and forth from Los Angeles in forty minutes, making the ranch easily accessible at all times to either the city, the mountains or the beaches. The little ranch offers excellent possibilities for growing crops of corn, grain and fruits. The owner is equally interested in the scenic attractions

and the producing end and is trying to make the most out of both. His flower garden is a thing of rare beauty, while the variety of both citrus and deciduous fruits, to say nothing of the fresh vegetables grown on the place delight the visitor. It is the intention of the owner eventually to give up his Los Angeles residence and make his home on the ranch.

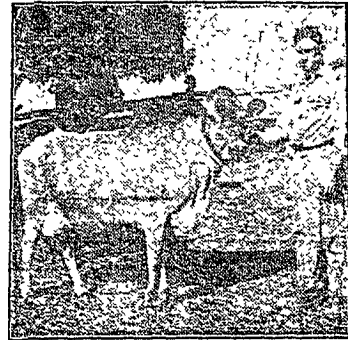
### GOOD STOCK ACQUIRED.

The livestock on the Bain ranch represents some of the best blood-lines in the country, and has been selected with great care. The ten head of Jersey cattle have breed-type and characteristics which immediately impress one. About forty head of pure-bred hogs are kept on the place, most of them being Poland Chinas, although there are a few Duroc Jerseys.

There are five Poland China gilts which were farrowed December 28, 1919, that are going to make wonderful brood sows. They have great length, large bone and great uniformity throughout, which, together with their excellent breed type, will make them hard to beat by the strongest competitor. They were sired by Long Smooth Jumbo and out of Beauty Girl and Tecumseh's Daughter. Three fine brood sows in Mr. Bain's herd, Miss Wanda Defender, Black Maid and Perfect Lady, recently tipped the scales at 1700 pounds. The last named sow recently gave birth to a fine litter of ten pigs, so it is very apparent that such stock as this will pay for their feed and leave a nice margin of profit besides. Harry Priestler, the herdsman in charge, is giving expert attention to this end of the business.

In addition to his herds of cattle and hogs, Mr. Bain has a fine flock of Barred Rock and White Leghorn chickens, and Mammoth Bronze turkeys that come from prize-winning stock. The high cost of fried chicken, or strawberries and Jersey cream would have no terrors for the owner of La Lomita, even were he not a man of affairs, for fruits, vegetables, butter and eggs are products which the ranch produces in abundance. The little dairy installed on this ranch is a model in itself. The milk goes from the cow into the separator and the skimmed milk is used for feeding the calves, pigs and chickens. It is not the intention of the owner to go into any department on a big scale, but what is raised

must be the very best and come up to a high standard, and nothing will be sold as a breeder unless it comes up to Mr. Bain's expectations.



La Lomita Ranch Jersey.

Zenobia Fern, sired by Smyrna's Golden Lad. She is held by Harry Priestler, the ranch herdsman.