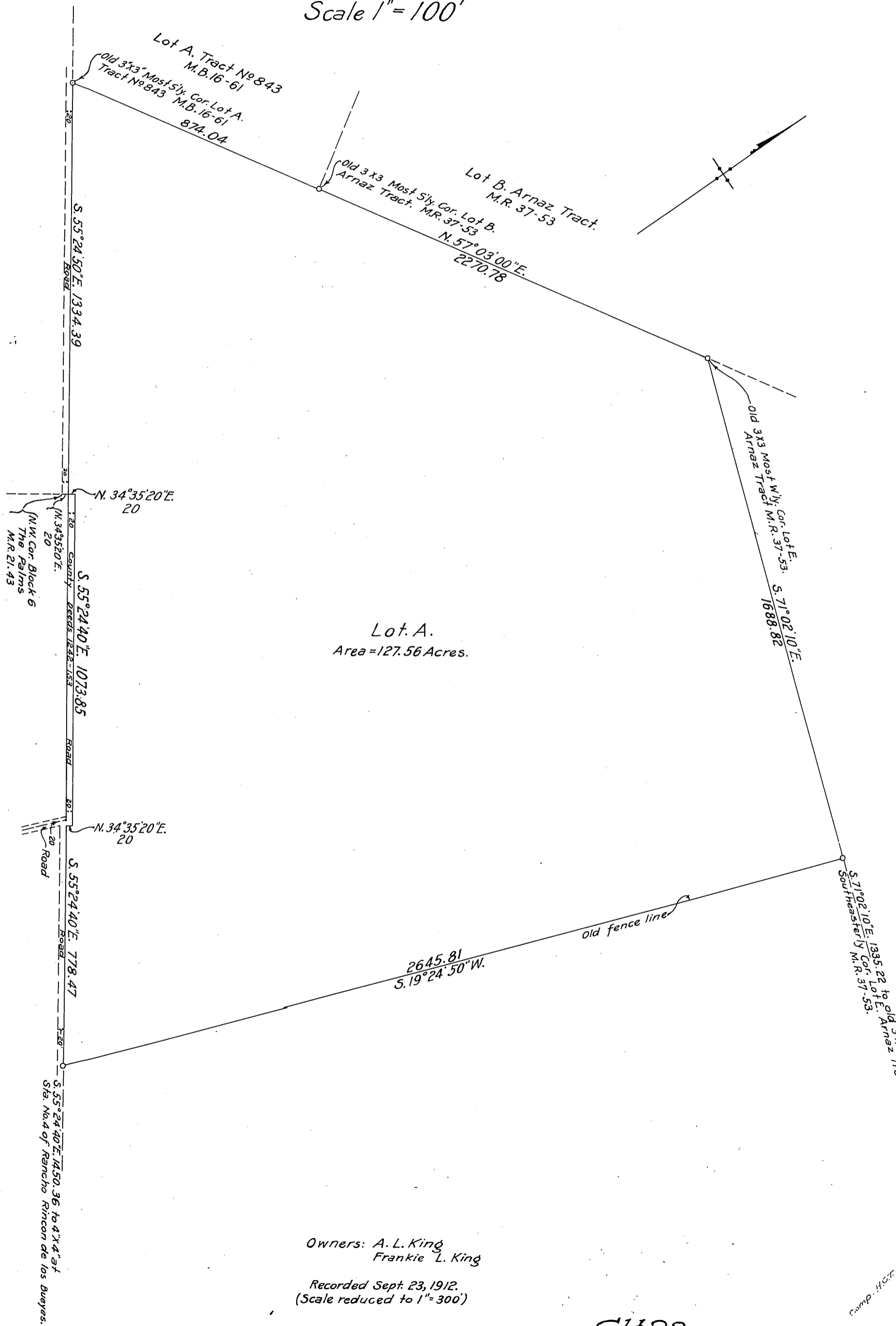




TRACT No. 1938

Being a part of a portion of Lot 1, Tract of Francisco Higuera in the Rancho Rincon de los Bueyes as per Recorders Filed Map No 190. Los Angeles County, Cal.

September 1912. Daniel S. Halladay. C.E.
Scale 1" = 100'



Owners: A. L. King
Frankie L. King

Recorded Sept. 23, 1912.
(Scale reduced to 1" = 300')

Sht. 22
A 94

Comp. H.C.T.