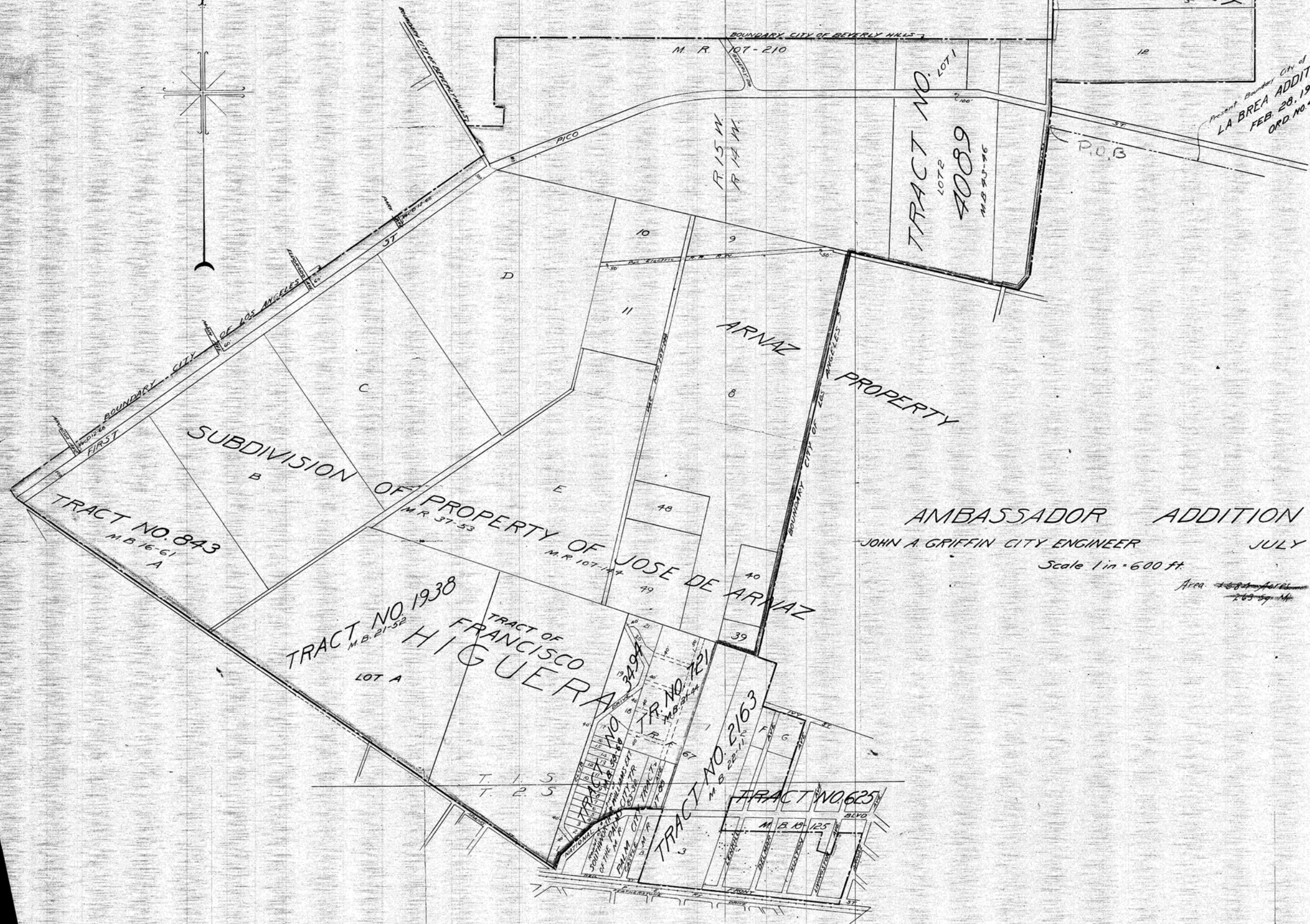


WHITWORTH TRACT
M.B. 20-145

Present Boundary City of Los Angeles
LA BREA ADDITION
FEB. 28, 1922
ORD. NO. 93043 (MS)



AMBASSADOR ADDITION

JOHN A. GRIFFIN CITY ENGINEER

JULY 1922

Scale 1 in = 600 ft.

Area 263 sq. ft.